

# P6121-V3

NEW

12.1" XGA TFT Industrial LCD Monitor

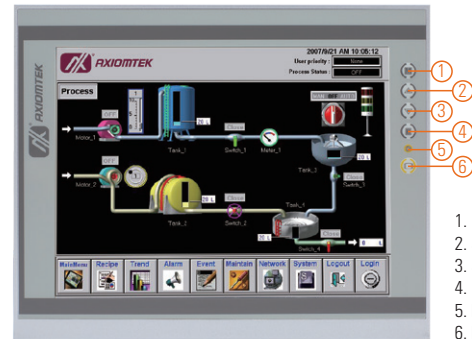


## Features

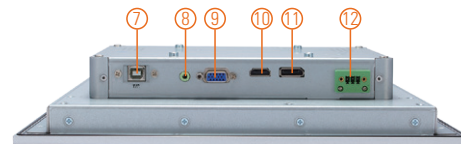
- 12.1" XGA TFT LED backlight LCD
- NEMA 4/12 (IP65) compliant flat panel monitor
- Supports panel mount, wall mount, and VESA arm
- Resistive touchscreen
- 24 VDC power input
- HDMI, DisplayPort, and VGA with multi-signal inputs



▲ Ultra-slim mechanism design



1. Menu
2. SEL+
3. SEL-
4. Exit
5. Power LED
6. Power switch



7. USB touch interface
8. Audio (Line-in)
9. VGA
10. HDMI
11. DisplayPort
12. 24 VDC power input

## Introduction

The P6121-V3 is an ultra slim industrial LCD monitor, which adopts 12.1-inch 500 nits XGA LED backlight LCD display and supports multi-signal interfaces including DisplayPort, VGA, and HDMI. Featuring NEMA 4/12 and IP65-rated compliant front bezel, 24VDC power input. Moreover, the P6121-V3 supports panel mount, wall mount or VESA FPMPMI (Video Electronics Standards Association Flat Panel Monitor Physical Mounting Interface) mounting. With the compact mechanism design, users can enjoy free from space constraint. It is especially suitable for POI/POS, excellent HMI, and all kinds of heavy-duty industrial fields.

## Specifications

Front Bezel	NEMA 4/12 (IP65)-compliant and metal front bezel	
Mounting	Panel mount, wall mount or VESA arm FPMPMI mounting (video electronics standards association flat panel monitor physical mounting interface)	
LCD Panel	Display	12.1" XGA TFT LCD
	Max. Resolution	1024 x 768
	Max. Colors	16.7M
	Active Area (mm)	245.76 x 184.32
	Pixel Pitch (mm)	0.24 x 0.24
	Response Time	25ms
	Backlight	LED backlight
	Backlight MTBF	30,000 hrs
	Viewing Angle (H/V)	178°/178°
Contrast Ratio	1000 (TYP.)	
Brightness (cd/m <sup>2</sup> )	500 nits	
Display Control	OSD (on screen display)	
Input Signal	DP	
	VGA	
	HDMI	
	Touchscreen: USB interface	

## Specifications

I/O Connectors	1 x USB for touchscreen version 1 x Audio (Line-in) 1 x VGA 1 x DisplayPort 1 x HDMI 1 x Power input with terminal block (DC version)
Audio	2 x Speaker
Power Adapter	DC version: 24VDC
Power Consumption	22W
Touchscreen	5-wire resistive touch
Dimensions	311.81 mm (12.28") (W) x 54.95 mm (2.16") (D) x 250.31 mm (9.85") (H)
Packing Dimensions	520 mm (20.47") (W) x 196 mm (7.71") (D) x 547 mm (21.53") (H)
Weight (net/gross)	2.35 kg (5.18 lbs)/2.8 kg (6.17 lbs)
Environment	Operating temperature: 0°C to +50°C (+32°F to +122°F) Relative humidity: 10% to 90% @ +40°C, non-condensing
Packing List	1 x P6121-V3 unit 1 x VGA cable 1 x USB cable for touchscreen 1 x Audio cable
Certificate	CE

## Ordering Information

P6121PR-DC-U-V3 (P/N: E226121114)	12.1" industrial monitor with resistive touch screen and DC version
--------------------------------------	---

\* Other configuration by request

\* Specification and certifications may vary based on different requirements

## Optional Accessories

50906D24000E	Adaptor 24V/120W, wire only
59902000030E	US 1.8M power cord
59904000050E	EK 1.83M power cord
59903000080E	EU 1.83M power cord
5946L203800E	HDMI cable
59461713910E	DisplayPort cable
82261210000E	Panel mount kit
82231770050E	Wall mount kit
E226171119	Desktop stand



### IP SYSTEMES

8 rue du Colonel Chambonnet – BP67

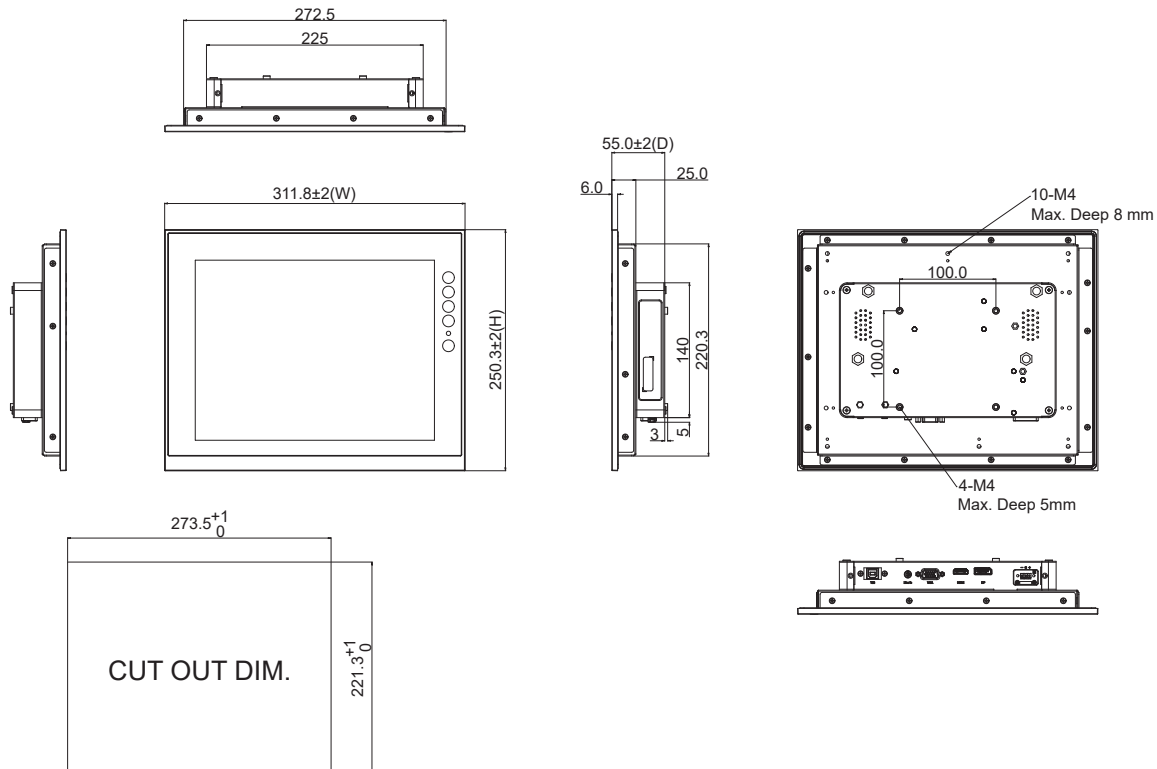
69672 BRON Cedex

Tel. : 04 72 14 18 00

Fax : 04 72 14 18 01

[www.ip-systemes.com](http://www.ip-systemes.com) – [info@ip-systemes.fr](mailto:info@ip-systemes.fr)

## Dimensions



1  
2  
3  
4  
5  
6  
7  
8

Industrial  
Touch  
Monitors