



14inch
Fully Rugged Notebook

Performance Upgrade



Windows



IP65



GPS



Camera



Dual-battery



Fingerprint



NFC



4G/5G



WiFi



Bluetooth

Performance

- 11th Gen® Intel® Core™ i5/i7 processor
- New Intel Iris® Xe core graphics card
- Support Windows 10 OS, Optional Windows 11 OS

Function

- 14-inch FHD, Optional touch screen
- Rich interfaces and extended function can meet various needs
- 6300mAh/7.4V+1750mAh/7.4V dual battery, Large battery support hot-swappable

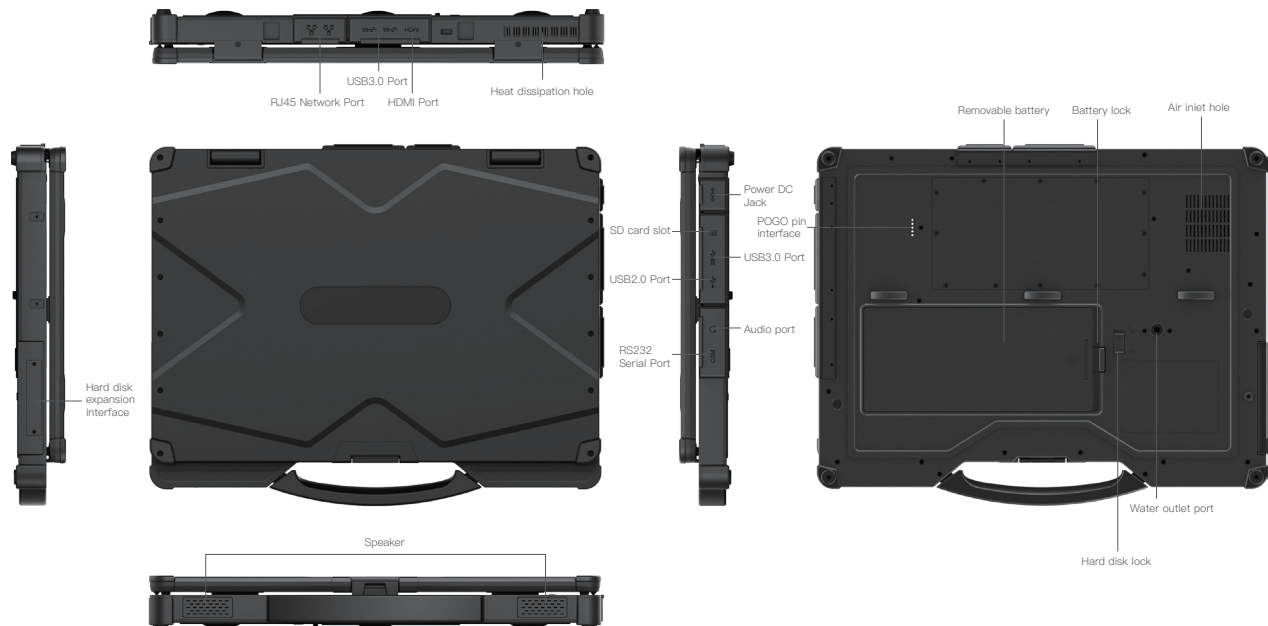
Communication

- High speed Wi-Fi 6
- Support M.2 interface 5G/4G selection
- Bluetooth 5.1 for higher transfer speeds

Reliability

- Press fingerprint identification
- IP65 high protection level, 1.22m fall resistant
- In accordance with MIL-STD-810H

Product Six Views



Specification Parameter

Basic parameters	
Dimension	363.2 x 287.4 x 42.1mm
Weight	device unit 2850g
Device Color	black
LCD	14 inch FHD 16:9, 1920x1080, 700nits
Touch Panel	Optional 10 point G+G capacitive touch screen Corning® Gorilla® Glass
Camera	Front 2.0MP
I/O	HDMI x 1, POGO 5pin x 1, USB 2.0 Type-A x 1, USB 3.0 Type-A x 3, SIM Card x 1, SD Card x 1, DB9 RS232 x 1, RJ45 x 2, Φ3.5mm standard earphone jack x 1, DC 19V 3.42A x 1 Passenger transfer card PCIE X4 slot or HDD x 1 (Optional)
Power	AC100V ~ 240V, Output DC 19V/3.42A/65W

Battery (Built-in)	
Capacity	7.4V/1750mAh
Type	Built in Li_polyment,battery loadable
Endurance	0.5hrs (Default 50% volume, default 200 nit, Play 720P HD video)

Battery (Hot-swappable)	
Capacity	7.4V/6300mAh
Type	Li_polyment, removeable battery
Endurance	6.5hrs (Default 50% volume, default 200 nit, Play 1080P HD video)

Performance parameter	
CPU	Intel® Core™ i5-1135G7/i7-1165G7
OS	Windows 10, Optional Windows 11
RAM	8GB/16GB
ROM	256GB/512GB/1TB

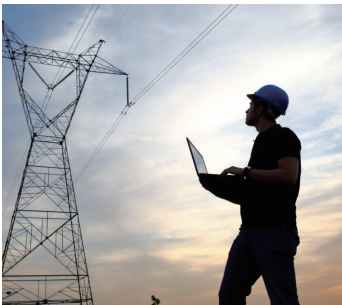
Communication	
WIFI	WiFi 6, 802.11a,b,d,e,g,h,i,k,n,r,u,v,w,ac,ax
Bluetooth	BT5.1
2G/3G/4G (Optional)	LTE-FDD: B1/B3/B5/B7/B8/B20 LTE-TDD: B40 WCDMA: B1/B5/B8 GSM: B3/B8
5G (Optional)	5G NR: n1/n2/n3/n5/n7/n8/n12/n20/n25/n28/ n38/n40/n41/n48*/ n66/n71/n77/n78/n79 LTE-FDD: B1/B2/B3/B4/B5/B7/B8/B12(B17)/B13/B14/ B18/B19/B20/B25/B26/B28/B29/B30/B32/B66/B71 LTE-TDD: B34/B38/B39/B40/B41/B42/B43/B48 LAA: B46 WCDMA: B1/B2/B3/B4/B5/B6/B8/B19
GNSS	Built-in GPS, Optional GPS+Beidou

Reliability	
Operate Temperature	-20 °C ~ 60 °C
Store Temperature	-30 °C ~ 70 °C
Humidity	95% Non-Condensing
Rugged Feature	IP65 certified, MIL-STD-810H certified
Drop Height	1.22m

Data Collection	
Fingerprint	SPI fingerprint (power on login)
NFC	Optional

Application Range

Various modules and accessories can be selected to meet customers' application in various industries.



Power Maintenance



Equipment Testing



Automobile Manufacturing



Energy Industry