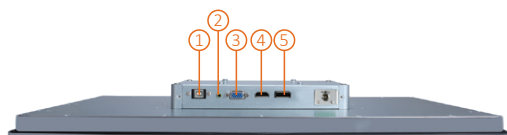
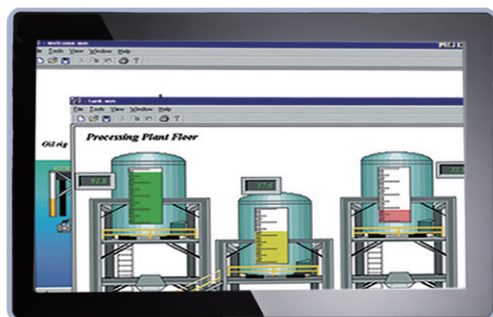


P6157W-V3

15.6" WXGA TFT Widescreen Industrial LCD Monitor



- | | |
|------------------------|----------------|
| 1. USB touch interface | 4. HDMI |
| 2. Audio (Line-in) | 5. DisplayPort |
| 3. VGA | |

Features

- 15.6" WXGA TFT with 400 nits of brightness
- Projective capacitive multi-touch
- NEMA 4/12 (IP65) compliant flat panel monitor
- Supports panel mount, wall mount, and VESA mount
- Full range screw-type (locked) AC-in or 24VDC in (optional)
- VGA, HDMI and DisplayPort, with multi-signal inputs



▲ Ultra-slim mechanism design

Introduction

The P6157W-V3 is a slim-type industrial LCD monitor with flat front bezel design, which adopts 15.6-inch 400 nits WXGA LCD display and supports multi-signal interfaces including DisplayPort, VGA, and HDMI. Featuring IP65 (NEMA 4)-rated front bezel, screw-type adaptor plug design, and 12/24V DC-in, the 15.6-inch P6157W-V3 is designed to fit for all kinds of industrial environments. Moreover, the P6157W-V3 supports panel mount, wall mount or VESA FPMPMI (Video Electronics Standards Association Flat Panel Monitor Physical Mounting Interface) mounting. With the compact mechanism design, the P6157W-V3 can be deployed easily in any space-limited place. It is especially suitable for POI/POS, HMI, and all kinds of heavy-duty industrial fields.

Specifications

Front Bezel	NEMA 4/12 (IP65)-compliant and flat front bezel	
Mounting	Panel mount, wall mount, and VESA arm FPMPMI mounting (video electronics standards association Flat Panel monitor physical mounting interface)	
LCD Panel	Display	15.6" WXGA TFT LCD
	Max. Resolution	1366 x 768
	Max. Colors	16.7M
	Active Area (mm)	344.232 x 193.536
	Pixel Pitch (mm)	0.252 x 0.252
	Response Time	8ms
	Backlight	LED
	Backlight MTBF	50,000 hrs
	Viewing Angle (H/V)	170°/160°
	Contrast Ratio	500 (TYP.)
Brightness (cd/m ²)	400 nits	

Display Control	OSD (on screen display)
Input Signal	VGA HDMI DisplayPort Touchscreen: USB interface
I/O Connectors	1 x USB for touchscreen version 1 x Audio (Line-in) 1 x VGA 1 x DisplayPort 1 x HDMI 1 x Power input with screw type connector (AC version) 1 x Power input with terminal block (DC version)
Audio	2 x Speaker
Power Supply	AC version: 100 to 240 VAC-DC, 12V3A, 36W power adapter DC version: 24 VDC
Power Consumption	17W
Touchscreen	Projective capacitive multi-touch
Dimensions	396.8 mm (15.62") (W) x 54 mm (2.13") (D) x 247.1 mm (9.73") (H)
Packing Dimensions	535 mm (21.06") (W) x 196 mm (7.71") (D) x 485 mm (19.09") (H)
Weight (net/gross)	4.1 kg (9.1 lb)/6.1 kg (13.44 lb)
Operating temperature	0°C to +50°C (+32°F to +122°F)
Relative humidity	10% to 90% @ +40°C, non-condensing
Certifications	CE, EN 61000-6-2, EN 61000-6-4, and FCC Class A

Ordering Information

P6157W-V3

P6157WPC-AC-U-V3 (P/N: E226157127)	15.6" industrial monitor with capacitive touch screen and AC version
P6157WPC-DC-U-V3 (P/N :E226157129)	15.6" industrial monitor with capacitive touch screen and DC version

* Other configuration by request

* Specification and certifications may vary based on different requirements

Packing List

1 x P6157W-V3 unit
1 x VGA cable
1 x USB cable for touch
1 x Audio cable
1 x Adapter (AC version only)
1 x 3-pin Terminal block (DC version only)

Optional Accessories

509000001500	Adaptor 24V/120W,wire only
599000001100	US 1.8M power cord
59904010000E	UK 1.83M power cord
59903000000E	EU 1.83M power cord
590000012700	HDMI cable
590000020900	DisplayPort cable 2M
881261570A0E	Panel mount kit
881231770A0E	Wall mount kit
E221177116	Desktop stand for 15.6" to 21.5"

Dimensions

