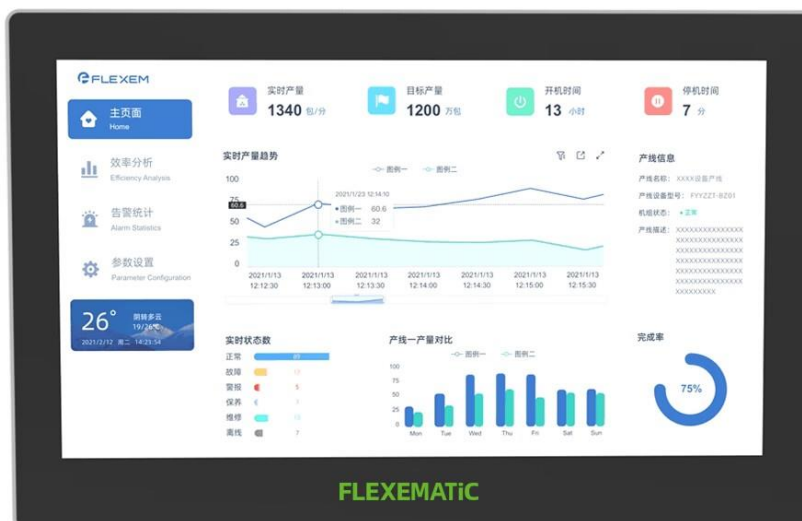


## 15.6” Intelligent Industrial IoT HMI

### FP916R



### Product Overview

FP9160R is a new generation 15.6” touch screen based on Linux operation system Intel X86 frame high performance processor and large memory. It can provide data processing and high-efficient running for devices. FAI910R’s configuration software is stronger than usual, it brings rich configuration and model selection, the new application can provide flexible, innovative and open programming experience.

FP910R adopts fully metal frame, touch screen design. Embedded installation method, various human machine interface communication. It is widely used on industrial manufacture scenarios.

### Product Specifications

#### 1. Hardware parameter

Display diagonal	15.6”
Display Type	16:9 LCD TFT
Resolution	1920x1080 pixels
Color range	Up to 16.7 million

<b>Brightness (cd/m<sup>2</sup>)</b>	250
<b>Backlight</b>	LED
<b>Half Brightness Life Time (MTBF*1)</b>	50000H
<b>LCD viewing angle (T/B/L/R)</b>	85'/85'/85'/85'
<b>Touch screen</b>	4-wire Resistive Type
<b>CPU</b>	Integrating Intel Celeron J3455 4 core 1.50GHz processor, up to 2.30GHz
<b>Random access memory</b>	8GB DDR3L, Support 1333/1600/1866 MHz
<b>Internal flash memory</b>	128GB, SATA SSD hard discs
<b>RTC</b>	Built-in
<b>Ethernet port</b>	2*RJ45, based on 10/100/1000Mbps
<b>USB Port</b>	4*USB3.0 (Type-A, Rear IO)
<b>Serial port</b>	1 * RS232 (COM1, Full lanes, DB9/M)
<b>HDMI Port</b>	2*HDMI (upright 90° Type-A): up to 3840x2160@30Hz
<b>WiFi function</b>	Optional
<b>Horn</b>	Built-in
<b>Download method</b>	USB drive / Ethernet port


## 2. Software parameter

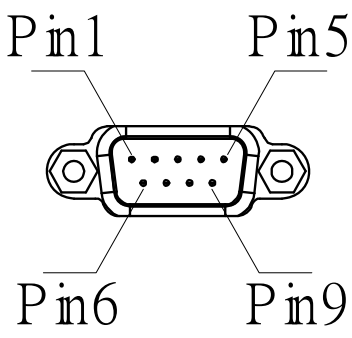


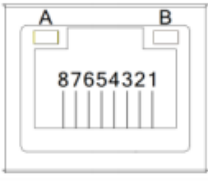
<b>Software parameters</b>	<b>Operating system</b>	Linux
	<b>Programming software</b>	FlexMi Unified
<b>Electrical specification</b>	<b>Rated power</b>	< 60W
	<b>Rated voltage</b>	DC12V/5A
	<b>Power supply protection</b>	Isolated power adapter,With lightning surge protection
	<b>Allowable power-off time</b>	< 5ms
	<b>Certification</b>	CE, RoHS

## 3. Environmental requirements

<b>Environmental requirements</b>	<b>Working temperature</b>	-10~60℃
	<b>Storage temperature</b>	-20~70℃
	<b>Environment humidity</b>	10~90%RH (Non condensing)
	<b>Anti-vibration</b>	10~25Hz (X,Y,Z direction 2G/30 min)
	<b>Cooling method</b>	Natural Cooling
<b>Mechanical Parameters</b>	<b>Installation method</b>	Panel mount
	<b>Protection</b>	Front: IP65,Rear: IP20
	<b>Mechanical Structure</b>	Non-ferrous metal alloy housing
	<b>Panel Cutout</b>	380mm×245mm
	<b>Net Weight</b>	About3000g

## Wiring Definition

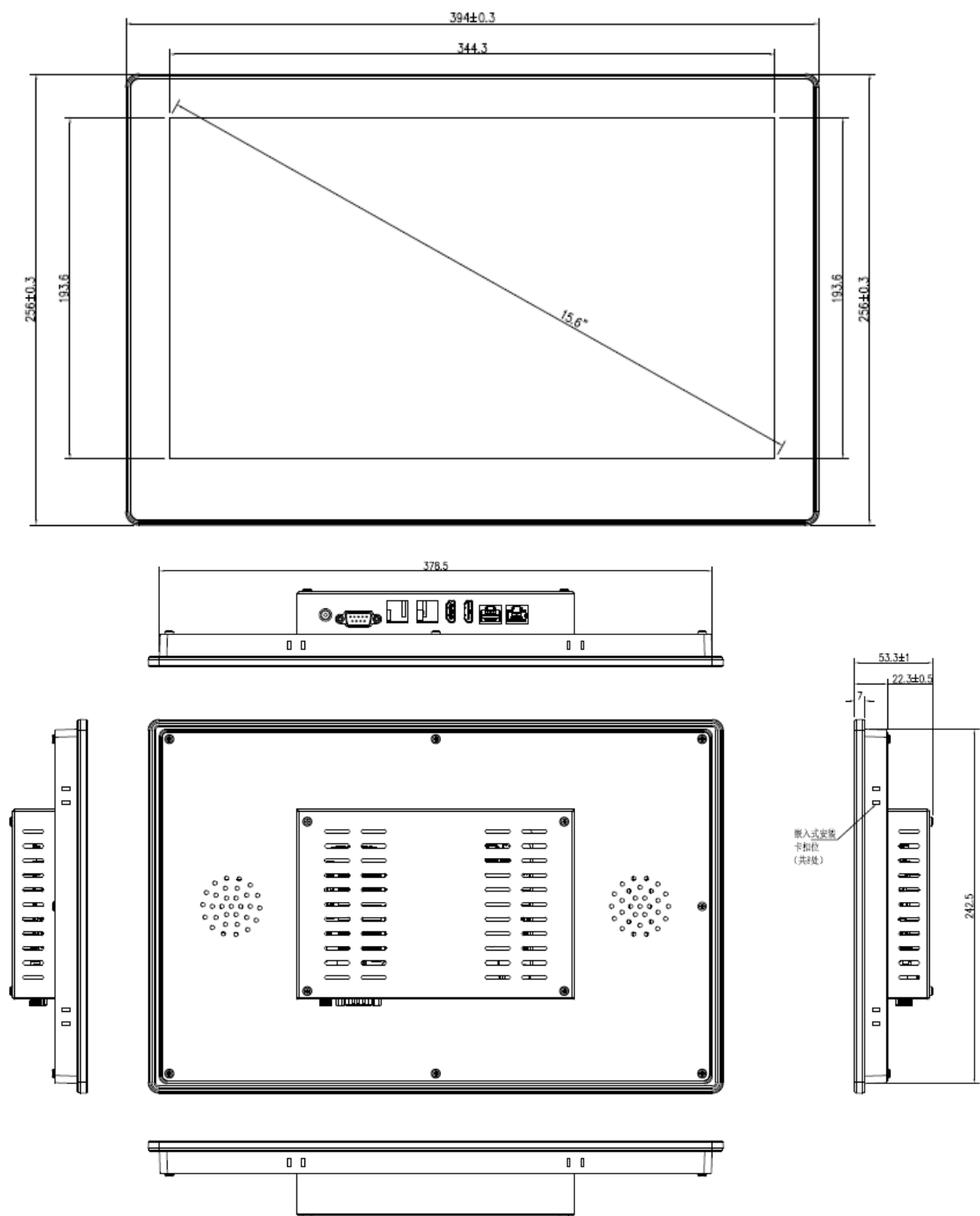
Port Type	Port diagram	Port Definition	Description
Power Terminals		Power Socket	Power socket

DB9 Serial Ports (COM1)		Pin	Functions																																				
		Pin1	DCD#																																				
		Pin2	RxD (COM1 RS232)																																				
		Pin3	TxD (COM1 RS232)																																				
		Pin4																																					
		Pin5	GND																																				
		Pin6																																					
		Pin7																																					
		Pin8																																					
		Pin9	RI#																																				
		Pin1	DCD#																																				
USB Port		USB 3.0 Type-A Host Port *4	Used for connecting U-DISC, scanning electrostatic code scanners.																																				
HDMI Port		HDMI 2.0a	supports 1080P display																																				
Ethernet Port		RJ45	<table border="1"> <thead> <tr> <th>Pin</th> <th>Definition</th> <th>Pin</th> <th>Definition</th> </tr> </thead> <tbody> <tr> <td>1</td> <td>MDI0_1+</td> <td>5</td> <td>MDI2_1-</td> </tr> <tr> <td>2</td> <td>MDI0_1-</td> <td>6</td> <td>MDI1_1-</td> </tr> <tr> <td>3</td> <td>MDI1_1+</td> <td>7</td> <td>MDI3_1+</td> </tr> <tr> <td>4</td> <td>MDI2_1+</td> <td>8</td> <td>MDI3_1-</td> </tr> <tr> <td rowspan="3">A</td> <td rowspan="3">Active LED</td> <td colspan="2">ACT: Twinkling Yellow</td> </tr> <tr> <td colspan="2">Only LINK: Lights Off</td> </tr> <tr> <td colspan="2">Stop: Lights Off</td> </tr> <tr> <td rowspan="3">B</td> <td rowspan="3">Speed LED</td> <td colspan="2">1000M: Turn Yellow</td> </tr> <tr> <td colspan="2">100M: Turn Green</td> </tr> <tr> <td colspan="2">10M: Lights Off</td> </tr> </tbody> </table>	Pin	Definition	Pin	Definition	1	MDI0_1+	5	MDI2_1-	2	MDI0_1-	6	MDI1_1-	3	MDI1_1+	7	MDI3_1+	4	MDI2_1+	8	MDI3_1-	A	Active LED	ACT: Twinkling Yellow		Only LINK: Lights Off		Stop: Lights Off		B	Speed LED	1000M: Turn Yellow		100M: Turn Green		10M: Lights Off	
Pin	Definition	Pin	Definition																																				
1	MDI0_1+	5	MDI2_1-																																				
2	MDI0_1-	6	MDI1_1-																																				
3	MDI1_1+	7	MDI3_1+																																				
4	MDI2_1+	8	MDI3_1-																																				
A	Active LED	ACT: Twinkling Yellow																																					
		Only LINK: Lights Off																																					
		Stop: Lights Off																																					
B	Speed LED	1000M: Turn Yellow																																					
		100M: Turn Green																																					
		10M: Lights Off																																					

## Dimension drawings

FP916R

Unit:mm



FP916R Panel Cutout: 380mm×245mm